

EAST ROCKHILL TOWNSHIP Report

Fall/Winter 2019

TOWNSHIP WEBSITE OFFERS NEW OPTIONS TO STAY INFORMED

Our already robust website is getting some upgrades this fall designed to make it even more convenient for you to find the important information you are looking for. Among the new features are the ability to customize notifications in your account settings for alerts to page postings (minutes), to bookmark pages, to add events directly to your calendar, share to your social media, and to do enhanced keyword searches.

To take advantage of these enhancements, a new login must be created. Once your new login has been created, select the notifications you would like to receive in account settings.



It has never been easier for you to stay up-to-date on all the important things going on around the township. Here are the primary ways we communicate:

- **Social Media:** Our Twitter account is @EastRockhillTwp. Breaking news and announcements are posted.
- **Email Alert:** visit our website homepage and sign up to receive real-time email announcements and customize notifications.
- **E-newsletter:** visit our website homepage and sign up to receive E-news, our monthly e-newsletter.
- **Print Newsletter:** this publication as sent via mail twice a year.

INSIDE THIS ISSUE:

Why the 2020 United States Census Matters.....	3	Support the Bucks County SPCA.....	8	Kathleen Percetti, Tax Collector.....	11
Township Building Project Update.....	3	Prepare Your Home for Winter.....	8	From the Penridge Regional Police Dept	11
2019 Fall Leaf Collection Set.....	4	In Our Parks	9	Heating Safety	12
Comprehensive Plan Update.....	5	We're Here to Help	9	Township Contact Information.....	14
Supervisors Notebook.....	6-7	Tips for Maintaining Your Septic System	10		
Rock Hill Quarry Update.....	8	Fall/Winter Stormwater Tips.....	10		

East Rockhill Township • 1622 North Ridge Road • Perkasie, PA 18944

This Edition of The East Rockhill Township Report is published by the Board of Supervisors to keep you informed on timely information about the township and your local government.

Visit us on the web at: www.EastRockhillTownship.org



MYCO
MECHANICAL

The Right People, The Right Results,
Redefining Responsible.

1 North Washington St
Telford, PA 18969

267.382.0267

mycomechanical.com

BEST PLACES to work in PA 2012-2013

www.communityatrockhill.org

WHAT DOES **INSPIRED LIVING** LOOK LIKE?



IT CAN BE **ACTIVE** ENGAGED CAREFREE

THE GOVERNMENT OF ROCKHILL
ALIVING INSPIRED BY REMARKABLE VALUES

No matter what inspired living looks like to you, it thrives here in our community!

We have immediate availability on select One Bedroom Models.
CALL TODAY!
(215) 257-2751, ext 2305

LAPP'S LANDSCAPE PRODUCTS LLC

Wholesale - Retail

ALL NATURAL HARDWOOD MULCH
BLACK OR BROWN HARDWOOD MULCH
WOOD CHIPS • RED MULCH • COMPOST
MUSHROOM SOIL • TOPSOIL

215-257-9040

1828 Old Bethlehem Pike • Sellersville

PICK-UP OR DELIVERY

C. ROBERT WYNN ASSOCIATES, INC.
MUNICIPAL ENGINEERING SERVICES

C. Robert Wynn, P.E.
President

211 West Broad Street
Quakertown, PA 18951

OFFICE: (215) 536-7336
FAX: (215) 536-5361
EMAIL: crwynn@msn.com

SERVING MUNICIPALITIES SINCE 1986

Hunsberger Electric

Serving Perkasie & Surrounding Communities since 1932

- We can handle all of your electrical needs •

ELECTRICAL CONTRACTING & MAINTENANCE
INDUSTRIAL – RESIDENTIAL – COMMERCIAL
Installation of Security Cameras,
Data, Phone, Motion Lights & Generators
Licensed and Insured

249 W. Market St. • Perkasie, PA 18944 **www.hunsbergerelectric.com**


Plug into our experience **215-257-4592**

GRIM BIEHN & THATCHER
Trusted Legal Counsel Since 1895



PERKASIE, PA 215.257.6811 WWW.GRIMLAW.COM

A Member of International Order of the **GOLDEN RULE**
The Rule You Know The People You Trust



Celebrating 100 years of Service to the Pennridge Community

Bernard Suess Funeral Home, Inc.
606 Arch Street, Perkasie, PA
215-257-2144

Jeffrey F. Gahman, Supervisor

Funeral Pre-Planning & Pre-Financing
Cremation Services & Casket Selection Room
Considerate, Respectful and Honest Service When You Need It The Most

WHY THE 2020 UNITED STATES CENSUS MATTERS

United States[®] Census 2020

Hospitals. Fire departments. Schools. Even roads and highways.

The census can shape many different aspects of your community. Each year, the results help determine how more than \$675 billion in federal funding is distributed to states and communities. It's also mandated by the Constitution - the United States has counted its population every 10 years since 1790.

By April 1, 2020, households across the country will receive an invitation to participate in the 2020 Census. You will have three options for responding: online, by phone, or by mail. When completing the census, you'll note where you are living on April 1, 2020.

In collaboration with the United States Census Bureau, the Bucks County Planning Commission has created a web portal for information and resources related to the upcoming April 2020 Census.

In addition to Census participation, there is also a link to Census Jobs. The US Census Bureau will be hiring thousands of people across the country.

Census Timeline

Counting every person living in the United States is a massive undertaking, and efforts begin years in advance. Here's a look at some of the key dates along the way:

January – March 2019: The U.S. Census Bureau opens 39 area census offices. These offices open early to support address canvassing.

June – September 2019: The Census Bureau opens the remaining 209 area census offices. The offices support and manage the census takers who work all over the country to conduct the census.

August 2019: The Census Bureau conducts in-field address canvassing. Census takers visit areas that have added or lost housing in recent years to ensure that the Census Bureau's address list is up to date.

January 2020: The Census Bureau begins counting the population in remote Alaska.

April 1, 2020: Census Day is observed nationwide. By this date, households will receive an invitation to participate in the 2020 Census. You'll then have three options for responding: online, by mail, or by phone.

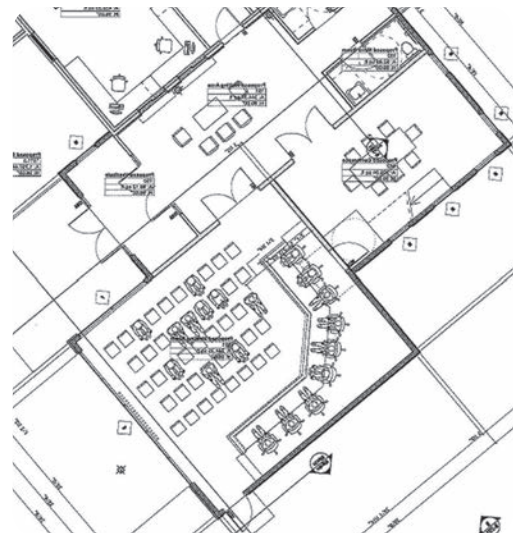
April 2020: Census takers begin following up with households around selected colleges and universities. Census takers also begin conducting quality check interviews.

May 2020: The Census Bureau begins following up with households that have not responded.

December 2020: The Census Bureau delivers apportionment counts to the president.

TOWNSHIP BUILDING PROJECT UPDATE

The Board of Supervisors and Administration are continuing to evaluate options for our Township Building renovation and expansion project. Addition and renovation project is out for bid and those bid results will be reviewed at the November 26 meeting. A tax increase is not necessary for this improvement.



2019 FALL LEAF COLLECTION SET

Starting the week of October 28, our Public Works Department will begin leaf collection throughout the Township. Please be aware this schedule is tentative; it is dependent on weather conditions and the volume of leaves we need to collect.

SECTION I

Week of October 28

Axe Handle Road
Clymer Road
Covered Bridge Road
Richlandtown Road
Sterner Mill Road

SECTION II

Week of November 4

Butler Lane
Crest Drive
Dell Drive
East Rock Road
Harriet Drive
Meadow Lane
Old Bethlehem Road
Ridge Road
School House Road
Schwenkmill Road, West (*above Ridge Road*)
Three Mile Run Road
Tower Road
Tunnel Road
Valley View Lane
West Rock Road
Willow Drive

SECTION III

Week of November 14

Azalea Court
Blue Rock Drive
Boulder Drive
East Rockhill Road
Hill Road
Holly Drive
Muskrat Road
North Rockhill Road
Old Bethlehem Pike
Park Avenue
Pebble Court
Richhill Road
Ridge Run Road
Rocky Mount Circle
Route 313
Shale Circle
Stone Edge Road
Woodbridge Court
Woodhollow Court

SECTION IV

Week of November 25

Arrowwood Drive
Blooming Glen Road
Branch Road
Bridgeview Drive
Bryant Drive
Buck Drive
Campus Drive
Cedar View Drive
Creekview Road
Deer Run Road
Dublin Way
Evergreen Lane
Fifth Street
Firethorn Drive
Greenleaf Circle
Hillendale Road
Lark Lane
Owl Lane
Pine Court
Schwenkmill Road, East
Schwenkmill Road, West (*below Ridge Road*)
Seven Corner Road
Sunnyside Lane
White Road
Winterberry Drive



Please follow these guidelines to ensure a successful collection:

- Have your leaves in neat piles along road frontage by 7am on the first day of collection for your section. Once leaves have been picked up on your street, do not place leaves out for a second collection; **we won't return to a street once the leaves have been collected.** Do not place leaves along street frontage impeding stormwater flow.
- Do not include rocks, sticks, trash, grass, or other material with your leaves. This does damage to the collection machine, causing downtime and expenses for repairs.
- Township employees and/or equipment are not permitted to enter private property to remove leaves; only leaves on road frontage can be removed.
- Collection of leaves is weather dependent; updates to the schedule will be posted on the Township website.

If you have additional leaves after your section pick up has been completed, do not place along street frontage impeding stormwater flow. Contact your private trash hauler for collection or dispose of in the yard waste containers behind the Township office Monday through Saturday from 6am to 9pm and on Sunday from 6am to 1pm. No bags or contractors are allowed. This site is electronically monitored.

NO OPEN BURNING ALLOWED IN THE TOWNSHIP

The Township's Code Enforcement Department and Pennridge Regional Police would like to remind residents that the burning of trash and recyclable materials -- including leaves and tree waste -- is prohibited by Township Ordinance in compliance with the Pennsylvania Department of Environmental Protection regulations.

COMPREHENSIVE PLAN UPDATE

Document will guide future development decisions

The process of updating our 2005 Comprehensive Plan, a vital document that guides growth in the Township, is almost completed and a draft is anticipated to be available for public comment in November. Once the draft is ready for public comment, an email alert will go out.

Your input is welcomed since the plan will help shape the community's future by providing decision-making guidance on such issues as zoning, open-space acquisition, transportation improvements, water supply planning, stormwater management and sewage facilities planning.

Careful planning is important because the state's Municipal Planning Code requires townships to provide opportunities for all types of land uses. For example, the Comprehensive Plan adds Agricultural Tourism as an allowed use but imposes sensible guidelines about where it can occur. The same holds for new uses such as medical marijuana dispensaries and private rental properties (Airbnb).



Thank
you

Thank You to the Businesses

This publication is made available through the generous advertising sponsorship of the businesses listed throughout our newsletter. We wish to encourage your patronage of these establishments. They play a substantial role in the economic vitality of our community.

CLASSIC EXTERIORS inc



Bill Blazer

- New & Remodeled
- Personal Service
- Competitive Prices
- Fully Insured

Phone/Fax: 215-453-7200 • Cell: 215-669-8529

Email: classicexteriors@hotmail.com

www.classicexteriorsinc.com

PA CONTRACTOR - PA #016450

CATTAIL LTD.



- LANDSCAPE
- FULL SERVICE
- HARDSCAPE
- FREE ESTIMATES
- GENERAL
- FULLY INSURED

Bill Blazer

Phone/Fax: 215-453-7200 • Cell: 215-669-8529

Email: cattailtd@hotmail.com

www.cattailtd.com

PA CONTRACTOR - PA #018928

Supervisors Notebook

A roundup of news and notes from around the township

Water Quality Update



The state Department of Environmental Protection continues to investigate the Ridge Run PFC site, which is loosely bounded by East Rockhill Road, North Rockhill Road, Bethlehem Pike, and North Ridge Road, and includes portions of East Rockhill Township, West Rockhill Township, and Perkasio Borough.

After one public supply well was found to contain combined concentrations of PFOA and PFOS that exceeded the Environmental Protection Agency's 70 parts per trillion Health Advisory Limit (HAL) and another public supply well was found to contain combined concentrations slightly below the limit, those wells were taken off-line and DEP immediately took steps to begin a thorough investigation of the surrounding area.

DEP issued a Statement of Decision on April 18, 2019 to install filters at 13 locations with concentrated levels above the HAL while the investigation continues.

To stay up to date on developments, visit www.dep.pa.gov and search for "Ridge Run PFC Site."

Snow Emergency Route

With winter coming, now is a good time to remind you that the Township's Snow Emergency Route is Buck Drive, Bryant Drive, Campus Drive, Deer Run Road, Fifth Street (Perkasie Borough line to Schwenkmill Road), Greenleaf Circle, Pine Court and Sunnyside Lane.

During a snow emergency cars cannot be parked on the street along the Snow Emergency Route to allow for efficient curb to curb snow removal.

Snow emergency situations are announced on Twitter and email alerts when posted to our homepage.



Road Improvements for 2019

Our Road Crew has been busy over the summer and early fall completing improvements to several roads. Newly paved roads include West Rock Road, Azalea Court and Holly Drive.

An ultra-thin bonded wearing course was applied to Hillendale Road and Creek View Drive.

Attention Golfers!

The Driving Range at Markey Park will remain open until mid-November, weather permitting. Until then, the range is open daily from dawn until dusk.

Tokens are available at the range from a dispenser for \$5 each. Tokens can also be purchased Monday through Friday between 8 a.m. and 4 p.m. at the Township Office. You can buy them there for \$5 each or seven (7) for \$33. Senior citizens can purchase tokens for \$4.50 apiece. One token gives a bucket of 55 balls.



Pines Parking Stickers

Residents living in the Pines at Pennridge development are encouraged to stop by the Township office to pick up your parking permit stickers. Police officers began looking for the new stickers in September and tickets are issued for vehicles without the parking sticker.

As a reminder, parking is prohibited Monday through Friday from 7:30am to 3pm on several streets without a permit: Buck Drive, Campus Drive, Deer Run Road, a section of 5th Street and Pine Court.

Budget Process Begins

The Administration has begun drafting a 2020 budget for review by the Board of Supervisors. As always, our goals will be to provide high-quality services to residents, businesses and visitors within a reasonable budget.

Budget meetings are advertised on our website. Residents are welcomed and encouraged to attend so your voice is heard.

Supervisors Notebook



Is Your Address Visible in an Emergency?

Imagine a member of your family is having symptoms of a heart attack and you call 911. You rightfully expect first-responders to get to you as soon as humanly possible.

But if your address number doesn't stand out well on your mailbox or door, a first-responder might drive right by. You wouldn't want them to pass by your home in the middle of an emergency when seconds are precious to a positive outcome.

The Board of Supervisors, on behalf of our police, fire and emergency medical personnel, encourage all property owners to take a few minutes to ensure addresses are clearly visible from the road, especially at night and in bad weather.

The key, according to experts, is to make sure house numbers are large enough, are on a contrasting background and do not blend in too well with their surroundings. First-responders must be able to quickly and easily make out the number from a distance, they say.

Recycling Guidelines

Avoid possible extra charges from your trash hauler by only placing accepted items in your recycling bin. For example, most paper, plastic (no caps), cardboard and metal are recyclable. Please make sure these items are empty, clean and dry. Among the common non-recyclable items are aerosol cans, aluminum foil, Styrofoam, pizza boxes, garden hoses, light bulbs and plastic bags. A good rule of thumb: when in doubt, throw it out. For a complete list of appropriate items, please visit our website.



Driveway Maintenance is Your Responsibility

Property owners are responsible for keeping their driveway pipes clear of debris so stormwater can flow in the right-of-way. Maintaining the driveway so that stone does not go onto the public road, causing traffic safety issues, is also required.

By the way, our Public Works Department installs up to four driveway pipes each year. The driveway must be located on a Township-owned road; cost is materials, plus a \$300 installation fee.

If you are interested in using this service, please send us an email or call requesting the installation. An agreement will be mailed to you with notification of the material cost, and an invoice sent after the work is completed.

If you choose to hire a contractor to install a driveway pipe, a Road Occupancy permit is required.

Ordinances Approved:

The Board of Supervisors recently approved two new ordinances aimed at promoting safety and improving the quality of life for residents:

- The speed limit was lowered to 35 mph on North Rockhill Road from the bridge over railroad tracks to Old Bethlehem Pike.
- The use of Jake brakes by trucks traveling on North Rockhill Road from Muskrat Road to Quarry Road is prohibited.

THANK YOU!

On behalf of all township residents, the Board of Supervisors and the staff of East Rockhill Township say "thank you" to the advertisers in this publication. With their support, we are able to write, design and print this newsletter printing at no cost to residents.

Attention Rental Property Owners

Tenant identification forms are required to be submitted to the Township annually. Please call the Township office if you have any questions.

No Hunting on Township Property

We remind everyone that no hunting is permitted on Township open space. The law states "no person shall hunt for, capture, kill or attempt to capture or kill, or aid or assist in the capturing or killing, in any manner, any wild bird or wild animal of any description."

A conviction for violating this Ordinance could result in a fine of \$1,000, plus costs for each violation.

If you see a dead animal in the road on a Township Road contact South East Region PA Fish and Game Commission at 610-926-3136 and if on a State Road PennDOT at 215-345-6060.

ROCK HILL QUARRY UPDATE



The Rock Hill Quarry is located at 2055 North Rockhill Road and in early 2018 it resumed quarry operations after at least 30 years of inactivity.

The Rock Hill Quarry is located in the E Extraction Zoning District which permits Extractive Operations by special exception. A recent Federal Court decision stated that quarry operations may continue on the property under the jurisdiction of the PA DEP.

The remaining zoning issue of the asphalt plant use was recently taken away from the East Rockhill Township Zoning Hearing Board as the Bucks County Court of Common Pleas ("BCCCP") Judge took jurisdiction of the matter by order dated June 18, 2019. East Rockhill Township then appealed the BCCCP's Order taking jurisdiction of the asphalt plant use issue and that appeal was dismissed by the Pennsylvania Commonwealth Court. The Commonwealth Court decision did not rule on the merits of the appeal but stated that the appeal was premature and that the Township could appeal at the conclusion of the BCCCP case and decision.

SUPPORT THE BUCKS COUNTY SPCA

Did you know Bucks County SPCA provides vital animal welfare services such as stray pet housing and care, pet adoption, animal cruelty investigation and prosecution, low-cost spay/neuter for cats, and much more?

With all the services they offer, you may be surprised to learn that the Bucks County SPCA is an independent, locally-supported non-profit organization. For more than a century, Bucks County SPCA has relied on the generosity of donations to carry out its important work.

If you would like to support their efforts, donations are accepted online, by phone 215-794-7425 or mail to Bucks County SPCA, P.O. Box 277, Lahaska, PA 18931.



PREPARE YOUR HOME FOR WINTER

As winter approaches, our thoughts turn to other activities as we plan for the annual hibernation to the indoors. This is also a good time to plan a safe hibernation for your house as well. The constant change in the weather can have a significant effect on your house that, if left unchecked, may result in major repairs in the future.

Now is the time to inspect your house for anything that does not appear to be normal. Things to look for include loose siding, missing or torn shingles, broken or sticking doors, missing caulking around windows or any other item that will leave your home exposed to the elements. Now is the time to start addressing these items before the cold weather sets in and these items are forgotten.

You may also want to take a look at other items that are often overlooked until it is too late. One important item is your home heating system. Most people who are not on a maintenance program forget to have service performed until well into the heating season when the furnace decides to stop working. Unfortunately, this is the time that most heating contractors are busiest and you may have to wait for service. Avoid the headache and plan ahead.

Items such as your water heater may need your attention as well as other home appliances. Remember to check and make sure water pipes are properly insulated and not exposed to freezing temperatures. Be sure that leaves and debris do not obstruct water flow from gutters and downspouts. Water that freezes and is allowed to back up rooftops often provides you with unwelcome leaks. The lists are endless, but remember your home is a major investment - take good care of it.

McELHARES SERVICE CENTER

Since 1956
215-257-2726
Auto Repair Service

93 S. Main St.
(Main & Park Ave.)

Sellersville, PA 18960

Hunter Four Wheel Alignment • Inspections
 New Emissions • General Repairs
 Brakes • Mastercraft Tires & Most Major Brands

THE ROCKHILL FILLING STATION

FAMILY RESTAURANT

Cozy environment, friendly people & great prices.

BYOB

Open Monday 7-2
Tues - Sunday 7-8

1710 N. Ridge Road
Perkasie, PA 18944

215-257-9552

Check out our seasonal specials with fresh ingredients on Facebook @therockhillfillingstation and online at www.therockhillfillingstation.com

IN OUR PARKS

Our beautiful park system has benefited from several projects recently.



We hope your children are enjoying the new Pines Playground equipment located along Fifth Street next to the Pines of Pennridge Development.



The walking path bridge along the Branch Creek Trail near Mood's Covered Bridge has been replaced.



Thanks to Will Calderone for his Eagle Scout Project



Travis Fazio completed his Eagle Scout project by installing path markers

WE'RE HERE TO HELP

Township administration and staff are ready and willing to answer questions or hear suggestions from residents about how we can better serve the community. We are best equipped to deal with day-to-day issues.

The Board of Supervisors sets policy and ensures the administration and staff work effectively and efficiently to carry out their vision.

For a timely response to your questions or concerns, please call the Township Office at 215-257-9156 or send an email to staff@astrockhilltownship.org.

Thank you!



TIPS FOR MAINTAINING YOUR SEPTIC SYSTEM

During the spring and summer, probably because of persistent heavy rains, we have seen several private septic systems fail. This is not only a health hazard but a potentially expensive repair project.

Here are tips from the Environmental Protection Agency for how to keep your septic system in good shape. Maintenance is not complicated and does not need to be expensive. Upkeep comes down to four key elements:

- **Inspect and Pump Frequently.** The average household septic system should be inspected at least every three years by a septic service professional. Household septic tanks are typically pumped every three to five years. Alternative systems with electrical float switches, pumps, or mechanical components should be inspected more often, generally once a year. A service contract is important since alternative systems have mechanized parts.
- **Use Water Efficiently.** The average indoor water use in a typical single-family home is nearly 70 gallons per individual per day. Just a single leaky or running toilet can waste as much as 200 gallons of water per day. All of the water a household sends down its pipes winds up in its septic system. The more water a household conserves, the less water enters the septic system. Efficient water use improves the operation of a septic system and reduces the risk of failure. Some ways to save water include high-efficiency toilets, faucet aerators, showerheads and clothes washers.
- **Properly Dispose of Waste.** Whether you flush it down the toilet, grind it in the garbage disposal, or pour it down the sink, shower, or bath, everything that goes down your drains ends up in your septic system. What goes down the drain affects how well your septic system works. Your septic system is not a trash can. An easy rule of thumb: Do not flush anything besides human waste and toilet paper. Your septic system contains a collection of living organisms that digest and treat household waste. Pouring toxins down your drain can kill these organisms and harm your septic system.
- **Maintain Your Drainfield.** Your drainfield -- a component of your septic system that removes contaminants from the liquid that emerges from your septic tank, is an important part of your septic system. Never park or drive on your drainfield, always plant trees the appropriate distance from your drainfield to keep roots from growing into your septic system. Keep roof drains, sump pumps, and other rainwater drainage systems away from your drainfield area. Excess water slows down or stops the wastewater treatment process.



FALL/WINTER STORMWATER TIPS

It is important to control stormwater pollution and stay vigilant in protecting our local waterways.

Here's how you can help:

- Use a mulch mower or compost grass clippings.
- Don't rake leaves onto a stormwater inlet.
- Recycle used motor oil and antifreeze.
- Apply fertilizer and lawn chemicals according to recommended rates and schedules.
- Place cigarette butts and other garbage in trash cans.
- Collect and properly dispose of pet wastes.
- Wash cars on grassy areas and keep soap suds away from drain inlets.
- Be careful with de-icing materials during the winter months. Sweep up any material remaining after the snow/ice melts. Pay attention to places that may have eroded during storm melt and improve those areas in the spring by planting native grasses, meadow plants or native trees and shrubs.



FROM THE DESK OF KATHLEEN PERCETTI, TAX COLLECTOR

All 2019 real estate taxes have been mailed out to all property owners. Please contact me if you have not received your bills; I will be happy to email you or send you a copy in the mail.

County and township real estate tax bills were mailed on March 1 and are now due in penalty until the end of this year. Pennridge School District real estate taxes were mailed on July 1 and are due in face until October 31. After October 31, the school taxes will be due in penalty until the end of the year. Final notices will be mailed out by November 15.

If you elected to pay school real estate taxes by installment, the remaining two installment coupons were mailed in mid-September. The second installment is due on October 31 and the final installment is due December 15. Please note that if you elect to opt in to pay by installments, you cannot opt out after the first payment is made.

If the property you own is your primary residence, you may be eligible to receive a reduction in your school tax bill as part of the Pennsylvania Taxpayer Relief Act. Under a homestead or farmstead property tax exclusion, the assessed value of each homestead or farmstead is reduced by the same amount before the property tax is computed. This year's exclusion amount was \$204.64.

The Pennsylvania Property Tax/Rent Rebate program benefits eligible Pennsylvanians age 65 and older, widows and widowers age 50 and older, and people with disabilities age 18 and older. The Property Tax/Rent Rebate is based on the property taxes or rents you paid during the previous calendar year. Property owner's eligible income including the income that your spouse earned while residing with you is \$35,000 or less. For renters that threshold is \$15,000 or less. Applicants can exclude 1/2 of their Social Security income. The rebates range from \$250-\$650 for homeowners and \$500-\$600 for renters. The maximum standard rebate is \$650, but supplemental rebates for qualifying homeowners can boost rebates to \$975.

More information can be found at www.revenue.pa.gov or you can contact me and I will send you the information.

If you would like to verify that your tax payments were received or have any other concerns, please contact me at 215-453-8866 or by email at eastrockhilltax@comcast.net. I would be happy to assist you with any questions that you have.



*Kathleen Percetti
Tax Collector*



FROM THE PENNRIDGE REGIONAL POLICE DEPARTMENT



Don't Flush Those Meds

Many times people accumulate unused medications and do not know what to do with them. Sometimes they flush the medications down the toilet or simply throw them in the trash. Sometimes the medications just remain stored in our medicine cabinet.

All three of these options are dangerous. If you get rid of them in the trash or flush them you are damaging the environment. If you store them, they could get in the wrong hands or even young hands.

We have the perfect solution... bring your unused medicine to our dropbox during business Monday through Friday for safe disposal.

There are two collection sites convenient to our community: one is our headquarters (200 Ridge Road); the other is in the Grand View Hospital lobby (700 Lawn Avenue).

Also, twice a year (October and April), the police department participates in a National Take Back Day program. Here are some interesting facts about the Medicine Take Back Program from this past spring:

- **Total Nationwide Law Enforcement Participation:** 4,969
- **Total Collection Sites:** 6,258
- **Total Weight Collected:** 937,443 pounds (468.72 tons)
- **In Bucks County,** we collected 10,086 pounds (also includes six-month collection)
- **Montgomery County** collected 7,716 pounds.



Heating Safety

There is something about the winter months and curling up with a good book by the fireplace. But did you know that heating equipment is one of the leading causes of home fire deaths? With a few simple safety tips and precautions you can prevent most heating fires from happening.

BE WARM AND SAFE THIS WINTER!

- Keep anything that can burn at least three-feet (one metre) away from heating equipment, like the furnace, fireplace, wood stove, or portable space heater.
- Have a three-foot (one metre) “kid-free zone” around open fires and space heaters.
- Never use your oven to heat your home.
- Have a qualified professional install stationary space heating equipment, water heaters or central heating equipment according to the local codes and manufacturer’s instructions.
- Have heating equipment and chimneys cleaned and inspected every year by a qualified professional.
- Remember to turn portable heaters off when leaving the room or going to bed.
- Always use the right kind of fuel, specified by the manufacturer, for fuel burning space heaters.
- Make sure the fireplace has a sturdy screen to stop sparks from flying into the room. Ashes should be cool before putting them in a metal container. Keep the container a safe distance away from your home.
- Test smoke alarms at least once a month.



Heating Equipment Smarts

Install wood burning stoves following manufacturer’s instructions or have a professional do the installation. All fuel-burning equipment should be vented to the outside to avoid carbon monoxide (CO) poisoning.

Install and maintain CO alarms to avoid the risk of CO poisoning. If you **smell** gas in your gas heater, do not light the appliance. Leave the home immediately and call your local fire department or gas company.



FACT

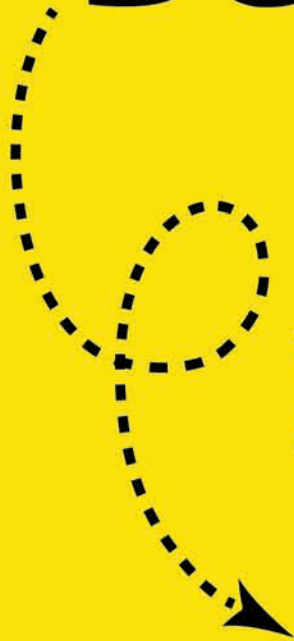
Half of home heating fires are reported during the months of **December, January, and February.**



**NATIONAL FIRE
PROTECTION ASSOCIATION**

The leading information and knowledge resource
on fire, electrical and related hazards

We're the Bee's Knees



KNEE REPLACEMENT
GRAND VIEW HOSPITAL

GVH GRAND VIEW HEALTH

East Rockhill Township Contact Information

1622 N. Ridge Road, Perkasie, PA 18944
 Telephone: 215-257-9156 • Fax: 215-257-1299
www.eastrockhilltownship.org

OFFICE HOURS & PHONE NUMBERS *(Unless Otherwise Noted)*

Administrative Office: Monday through Friday
 from 8:00 am to 4:00 pm, unless posted otherwise,
 215-257-9156

Road and Public Services: Monday through
 Friday from 7:00 am to 3:00 pm, 215-257-9156

Police Emergency: 24 Hours – 911

Police Non-Emergency: 215-257-5104

Fire Emergency: 911

Tax Collector: 215-453-8866

Board of Supervisors:

Gary W. Volovnik, Chair
 David R. Nyman, Vice-Chair
 James C. Nietupski, Member

Administrative Staff:

Township Manager & Zoning Officer
 Marianne K. Morano
manager@astrockhilltownship.org

Administrative Assistant

Bonnie Schorr
admin@astrockhilltownship.org

Public Works

Jeff Scholl, Director
works@astrockhilltownship.org

Pennridge Regional Police Department:

200 Ridge Road, Sellersville, PA 18960
 Non Emergency Telephone: 215-257-5104
 Emergency Telephone: 911

Tax Collector: Kathleen Percetti;

Mailing address: P.O. Box 68, Perkasie, PA 18944
 Telephone: 215-453-8866
 Office Address: 2037 Hill Road, Sellersville, PA 18960

Meetings:

The Board of Supervisors: Regular Meetings are the
 4th Tuesday of each month at 7 p.m., except in Dec. -
 meeting is advertised for 12/19.

Planning Commission: Work Sessions are the 1st
 Thursday of each month at 7 p.m. and Regular
 Meetings are the 2nd Thursday of each month at 7 p.m.,
 as needed.

Zoning Hearing Board:

Meetings are scheduled as needed

UCC Joint Appeal Board:

Second Wednesday of month as needed at 7 p.m.

Recreation Committee:

2nd Tuesday of Feb, May, Aug, Nov
 7 p.m., as needed

Police Commission:

4th Wednesday of every month at
 7 p.m., at 200 Ridge Road

THIS YEAR, THE GENERAL ELECTION IS SCHEDULED FOR TUESDAY, NOVEMBER 5.

East Rockhill Township is divided into two voting districts, but there is only one polling place:



Christ Community Bible Church
 1830 North Ridge Road • Perkasie, PA 18944

Visit our website for a map of the voting districts.

New voters must show identification the first time they vote in a new district. Voters who are ill or will be away from their designated voting districts on Election Day can download an Absentee ballot from the Bucks County website or pick up a form at the Post Office, Township Building, Wine & Spirit Shoppe, or Library.



Success Rehabilitation, Inc.



We Put You First

...By improving the lives of individuals with a traumatic brain injury or other neurological impairment through residential and/or outpatient therapies.

5666 Clymer Road • Quakertown PA 18951
215-538-3488 • SuccessRehab.com

happy tree



STEPHEN REDDING
Founder

www.happytreeltd.com

FULLY INSURED • REASONABLE RATES

215-257-7650

126 Reller Road • Green Lane, PA 18054

Tree Service, Landscaping, Plant Health Care

Quality work and integrity in our business dealings are the hallmarks of Happy Tree.

- **Professional arborist services** for all large trees including pruning, shaping, deadwood removal, cabling, bracing, cavity work, storm damage repair, hazard evaluation, and tree removal.
- **Complete landscaping services from design through installation and maintenance.** Design services from our own in-house Registered Landscape Architect. We grow our own trees and shrubs to ensure top quality, hardy installations.
- **Cutting-edge plant health care treatments,** including nutritional support, feeding, pest control, and treatment of disease.

“SATISFACTION THAT GROWS!”

C & C



Cafe

609 West Market Street
Perkasie, PA 18944

215.257.3400
215.257.3115 Fax
candccafe@verizon.net

Catering Available

Hours: Tuesday-Sunday:
7:00 am to 3:00 pm

Parking In Rear

**10%
OFF**

with this ad

Your Local Hometown Door Professional

KJ DOORS

Garage Doors & Openers • Broken Springs Replaced

215.723.5800

751 Harleysville Pike • Telford, PA 18969

www.KJDOORS.com PA 022703

Residential & Commercial (Sales & Service)



The Commerical
Refrigeration and
HVAC Experts

**DIVERSIFIED
REFRIGERATION
INCORPORATED**



- Design and Installation •
- Planned Preventative Maintenance •
- Service and Repair •

of Commercial Refrigeration, Heating,
Air Conditioning and Ventilation Systems

24-HOUR EMERGENCY SERVICE

105 High Street • Dublin, PA 18917 • Phone: 215-249-0445

TOLL FREE 1-800-938-COOL • www.divref.com

**Bucks County's Finest Luxury
Townhome Rentals**



**DOYLESTOWN • CHALFONT
PERKASIE • SELLERSVILLE**

HERITAGE
Property Management

844.710.8380



**PETS STAY
FREE!**

HeritagePropertyRentals.com

East Rockhill Township

1622 North Ridge Road
Perkasie, PA 18944



PRESORTED
STANDARD
U.S. POSTAGE
PAID
HARRISBURG, PA
PERMIT NO. 609



Fall/Winter 2019

hometownpress

This Community Newsletter is produced for the East Rockhill Township
by Hometown Press • 215.257.1500 • All rights reserved®



To Place An Ad Call Denise At Hometown Press • 610-346-6126 • DeniseOfHTP@yahoo.com
Content provided by Joe Ferry • 267-772-0740



215-257-9313

Certified water treatment specialist
30 years experience

Three Generations serving you



- Water Softeners
- Bacterial Control
- Reverse Osmosis
- Well Tanks
- pH Correction
- Iron Reduction
- Well Pumps
- Water Heaters

\$5 off service call with this ad - with payment at time of service

CONTEMPORARY GARDEN SUPPLY

Full Installation of Landscaping, Hardscaping & Ponds

Complete Garden Supply Store

Bulk & Bagged Mulch • Trees & Shrubs
Annuals & Perennials • Tools
Lawn Care • and much more...



401 EAST CALLOWHILL STREET • PERKASIE • 215-453-0900

www.contemporarygardenspa.com PA#033372

LBIS LLC

LUCILLE BONDI INSURANCE SOLUTIONS

FREE CONSULTATIONS
215-256-5954
Medicare Supplement Specialists

Medicare Supplement Specialists
18 Years Experience in the Senior Medicare Market
Supplements - RX Plans - Advantage Plans

439 Main Street, Rear Building | Harleysville, PA 19438
lucille@bondimedicaresolutions.com | www.bondimedicaresolutions.com



Care & Share
MCC
THRIFT SHOPPES

ONE PURCHASE CAN MAKE A
BIG DIFFERENCE

Spend the day with us Shop: M-W. 9-6; Th-F. 9-8; Sat. 9-6
Souderton Center • 783 Rt. 113, Souderton PA

careandshareshoppes.org • 215-723-0315