

STORMWATER MANAGEMENT PLAN
NEW PARKING & PRACTICE FIELD
FOR
PENNRIDGE SCHOOL DISTRICT

PROFESSIONAL SEAL	SCALE: AS SHOWN
DATE: MAY 17, 2021	
K&W PROJECT: 2280.004	
DRAWN BY: EFM/KGC	
CAD DRAWING: 2280.004-2_SWM EXF.dwg	

REVISIONS	NO.	DATE	DESCRIPTION
	1		
	2		
	3		
	4		
	5		
	6		
	7		

PLAN TYPE:
OVERALL EXISTING FEATURES PLAN

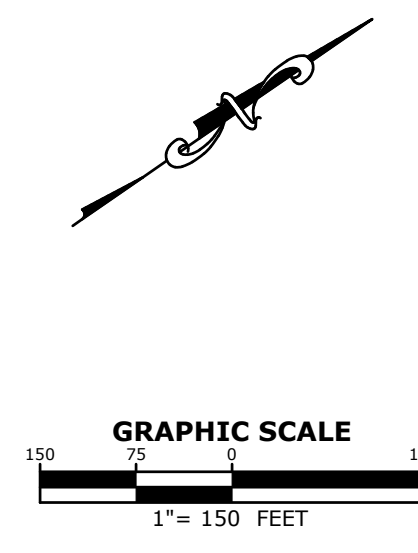
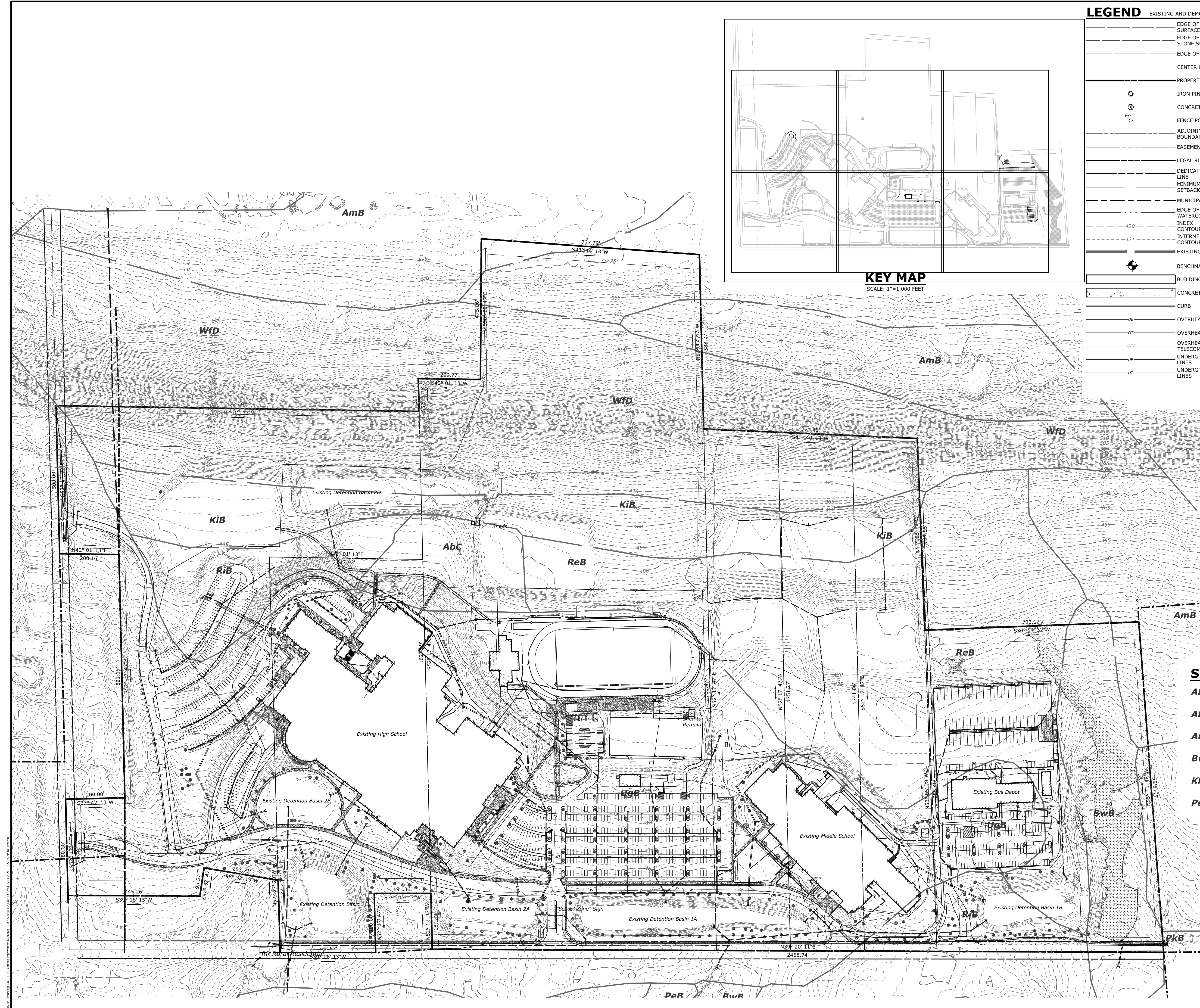
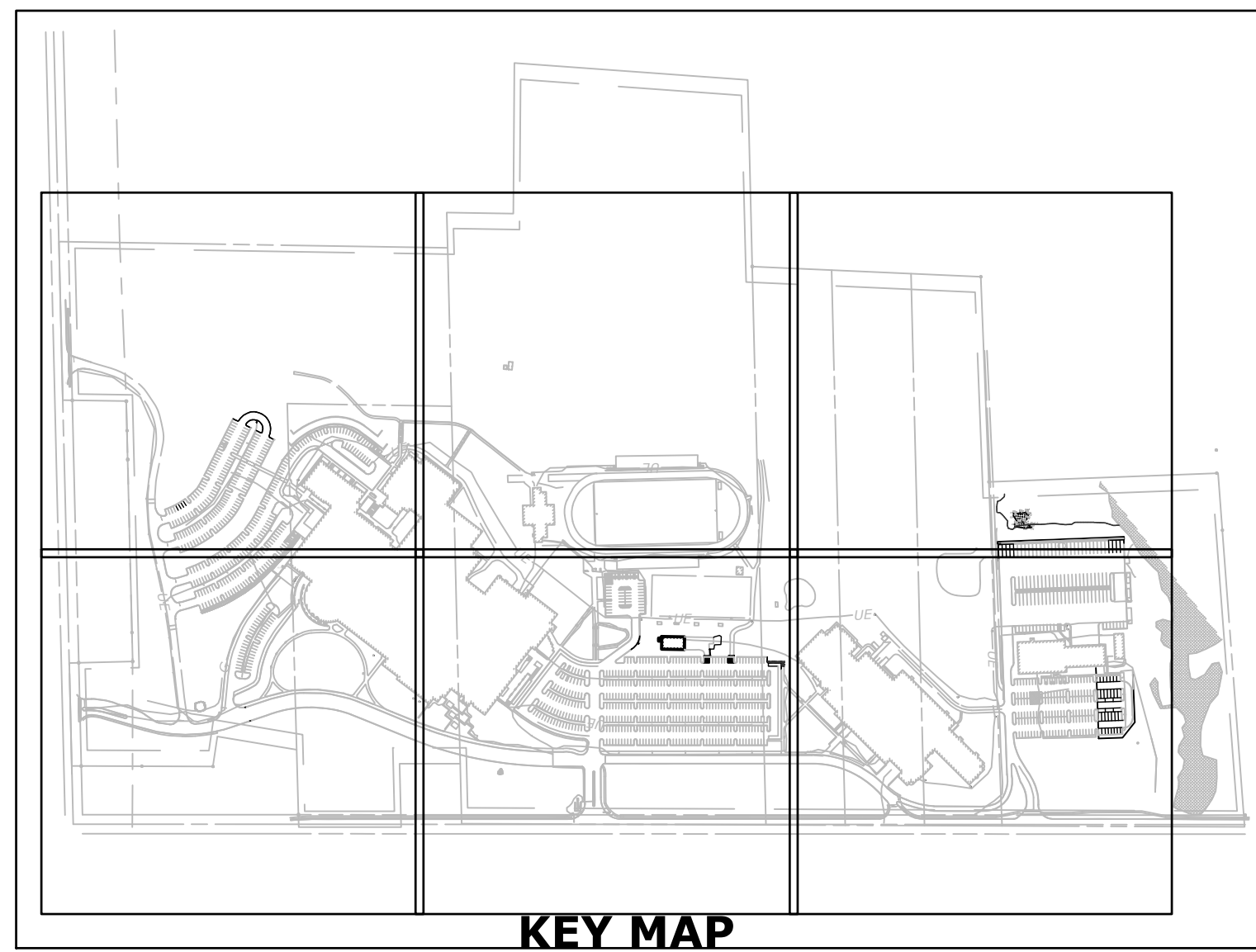
LEGEND EXISTING AND DEMOLITION FEATURES

—	EDGE OF PAVED BITUMINOUS SURFACE	○	MANHOLE
—	EDGE OF GRAVEL OR CRUSHED STONE SURFACE	○	UTILITY POLE
—	EDGE OF ROADWAY SHOULDER	—	GUY WIRE
—	CENTER LINE	○	LIGHT STANDARD OR LAMPPOST
—	PROPERTY BOUNDARY LINE	○	BOLLARD
—	ADJOINING PROPERTY BOUNDARY LINE	○	ELECTRIC METER
—	EASEMENT LINE	○	ELECTRIC BOX
—	LEGAL RIGHT OF WAY LINE	○	TELEPHONE BOX
—	DEDICATED RIGHT OF WAY LINE	○	DRAINAGE PIPE
—	MINIMUM BUILDING SETBACK LINE	○	DRAINAGE INLET
—	MUNICIPAL BOUNDARY LINE	○	RIP-RAP
—	EDGE OF EXISTING SURFACE WATERCOURSE	○	UNDERGROUND NATURAL GAS LINE
—	INDEX CONTOUR LINE	○	GAS VALVE
—	INTERMEDIATE CONTOUR LINE	○	GAS METER
—	EXISTING SOILS	○	TREELINE
○	BENCHMARK LABEL	○	WALL
□	BUILDING	○	SANITARY SEWER GRAVITY LINE
—	CONCRETE SURFACE	○	SANITARY SEWER FORCEMAIN LINE
—	CURB	○	SANITARY SEWER CLEANOUT
—	OVERHEAD ELECTRIC LINES	○	WATER LINE
—	OVERHEAD TELECOM LINES	○	WATER VALVE
—	OVERHEAD ELECTRIC & TELECOM LINES	○	FIRE HYDRANT
—	UNDERGROUND ELECTRIC LINES	○	WELL
—	UNDERGROUND TELECOM LINES	○	WATER METER
		○	WETLAND
		○	FENCE
		○	GUIDERAIL
		○	MAILBOX
		○	SIGN

- SURVEY NOTES**
- THIS SURVEY WAS PERFORMED AND MAPPING PREPARED WITHOUT THE BENEFIT OF A TITLE REPORT.
 - BOUNDARY AND TOPOGRAPHIC INFORMATION SHOWN ARE BASED ON A FIELD SURVEY PERFORMED BY K&W ENGINEERS, COMPLETED JUNE 2020.
 - PROPERTY LINES SHOWN ARE PLOTTED FROM DEEDS OF RECORD, RECORDED SUBDIVISION PLANS AND BOUNDARY EVIDENCE FOUND.
 - VERTICAL CONTROL IS BASED ON THE NORTH AMERICAN VERTICAL DATUM OF 1988 (NAVD 88).
 - BEARINGS ARE BASED ON PENNSYLVANIA STATE PLANE COORDINATE SYSTEM, SOUTH ZONE, NORTH AMERICAN DATUM OF 1983 (NAD 83-2011).
 - RIGHT-OF-WAY LINES FOR N. 4TH STREET AND BLOOMING GLEN ROAD ARE BASED ON FIELD SURVEY EVIDENCE AND PLANS OR OTHER INFORMATION PROVIDED BY PENNDOT DISTRICT 6-6 FOR S.R. 4039 AND EAST ROCKHILL TOWNSHIP.
 - ON SITE UTILITY LOCATIONS ARE BASED ON S.U.E. MARK-OUT PERFORMED BY THE LEXIS GROUP ON APRIL 21, 2020 THROUGH USE OF GROUND PENETRATING RADAR (GPR) IN COMPLIANCE WITH QUALITY LEVEL 'B' OF CIASCE 38-02, STANDARD GUIDELINE FOR THE COLLECTION AND DEPICTION OF EXISTING SUBSURFACE UTILITY DATA. ANY NON-LOCATABLE UTILITIES DISCOVERED THROUGH RECORD INFORMATION OR OTHERWISE ARE SHOWN AT QUALITY LEVEL 'C' OR 'D'.
 - SOME UTILITIES AND UNDERGROUND PIPE LOCATIONS COULD NOT BE VERIFIED AND FURTHER INVESTIGATION IS REQUIRED. APPROXIMATE UTILITY AND PIPE LOCATIONS SHOWN ARE IN COMPLIANCE WITH QUALITY LEVEL 'C' OF CIASCE 38-02, STANDARD GUIDELINE FOR THE COLLECTION AND DEPICTION OF EXISTING SUBSURFACE UTILITY DATA AND ARE BASED ON PLANS PROVIDED BY THE CLIENT.
 - BY SCALED MAP LOCATION AND GRAPHIC PLOTTING ONLY, THIS PROPERTY APPEARS TO BE COMPLETELY IN ZONE X (AREAS DETERMINED TO BE OUTSIDE THE 0.2% ANNUAL CHANCE FLOODPLAIN) ACCORDING TO THE FLOOD INSURANCE RATE MAP FOR EAST ROCKHILL TOWNSHIP, COMMUNITY PANEL NUMBER 42017C0144, EFFECTIVE DATE MARCH 16, 2015.

SOILS INFORMATION

AbB ABBOTTSTOWN SILT LOAM, 3 TO 8 PERCENT SLOPES [HYDROLOGIC GROUP D]	PkB PENN-KLINESVILLE CAHNNERY SILT LOAM, 3 TO 8 PERCENT SLOPES [HYDROLOGIC GROUP C]
AbC ABBOTTSTOWN SILT LOAM 8 TO 15 PERCENT SLOPES [HYDROLOGIC GROUP D]	ReB READINGTON SILT LOAM 3 TO 8 PERCENT SLOPES [HYDROLOGIC GROUP C]
AmB AMWELL SILT LOAM, 3 TO 8 PERCENT SLOPES [HYDROLOGIC GROUP D]	RiB READINGTON SILT LOAM, 3 TO 8 PERCENT SLOPES [HYDROLOGIC GROUP C]
BwB BUCKINGHAM SILT LOAM, 3 TO 8 PERCENT SLOPES [HYDROLOGIC GROUP C/D]	TrB TOWHILL SILT LOAM, 3 TO 8 PERCENT SLOPES [HYDROLOGIC GROUP C/D]
KiB KLINESVILLE VERY CHANNERY SILT LOAM, 3 TO 8 PERCENT SLOPES [HYDROLOGIC GROUP D]	UgB URBAN LAND-ABBOTTSTOWN COMPLEX, 0 TO 8 PERCENT SLOPES
PeB PENN CHANNERY SILT LOAM, 3 TO 8 PERCENT SLOPES [HYDROLOGIC GROUP C]	WfD WEIKERT-CULLEOKA COMPLEX, 15 TO 25 PERCENT SLOPES [HYDROLOGIC GROUP D]



Small text at the bottom left corner containing project details and dates.